

FUSRAP MAYWOOD SUPERFUND SITE

CALL BEFORE DIGGING IN THESE AREAS

Areas on figures are approximate

(201) 909-0023

Figure Number and Name	Area of Concern Begins (address)	Area of Concern Ends (address)
1 - New Jersey Route 17	At NJ Rt 17 at Central Avenue	At NJ Rt 17 at 99 Essex Street
1 - Williams-TransCo Natural Gas Pipeline	At NJ Rt 17 at Central Avenue	At NJ Rt 17 at 99 Essex Street
2 - W. Hunter Avenue	Remediation Complete	Remediation Complete
3 - Interstate 80	At I-80 and Long Valley Road	At I-80 and 178 Essex Street
4 – Branca Court	Remediation Complete	Remediation Complete
5 - Redstone Lane**	Remediation Complete	Remediation Complete
6 - Trudy Drive	Remediation Complete	Remediation Complete
7 - Hancock Street North	At Redstone Park	At Industrial Road
7 - Hancock Street/Brook Street	Intersection of Brook St and Garibaldi Ave	Intersection of Brook St and Garibaldi Ave
8 - Money Street	At Mitchell Street	At Sidney Street
9 – Columbia Lane	Remediation Complete	Remediation Complete
10 - Garibaldi Ave	At Brook Street	At 99 Garibaldi Ave
11 – U.S. Route 46	All of US Route 46	All of US Route 46
12 - Industrial Road and Pump House	Remediation Complete	Remediation Complete

**Remediation at the Redstone Lane RPI is complete. Remediation on the adjacent pump station utility is still necessary and is reflected on Figure 5 (Redstone Lane).



Figure 1 – New Jersey Route 17 and Williams-TransCo Natural Gas Pipeline



Figure 3 – Interstate 80



Figure 5 – Redstone Lane



Figure 7 – Hancock Street North, Hancock Street/Brook Street



Figure 8 – Money Street



Figure 10 – Garibaldi Avenue

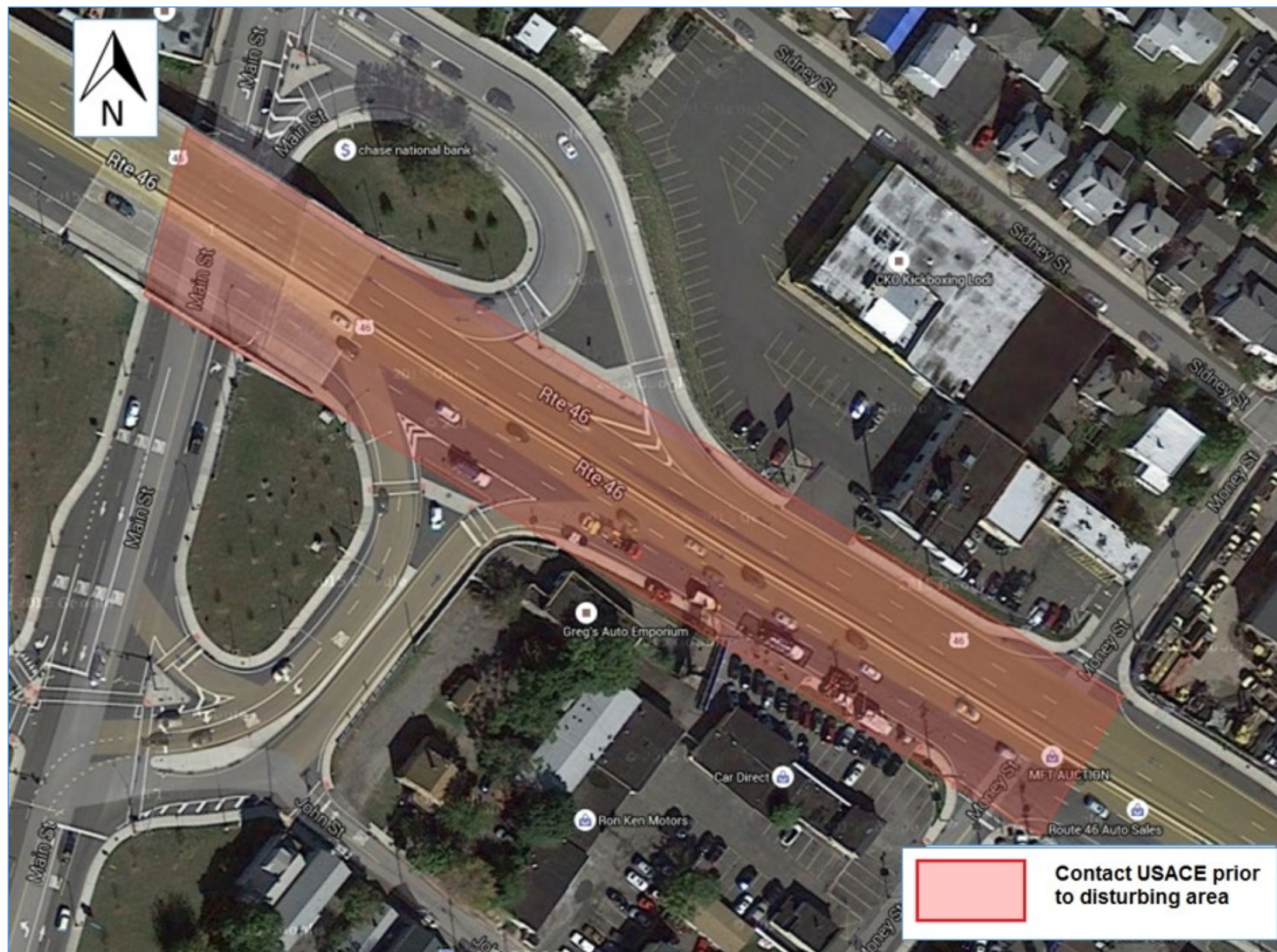


Figure 11 – U.S. Route 46